

Butel ARC-500 Software

By Larry Van Horn, N5FPW

Sometimes it is hard to teach an old dog new tricks. I guess I am one of those radio hobbyists who has a problem with approaches from time-to-time, especially when I program up the newer generations of scanners. Now don't get me wrong, I love my E PSR-500. But, there were some programming concepts I was having some difficulty with. I needed a quick fix and the answer was not some computer software do the heavy lifting for me.

So, I jumped on the Internet and did some research on what software packages were available for the new GRE scanners. It didn't take long for me to decide on a software package from one of the most reputable names in the scanner software industry – Butel.

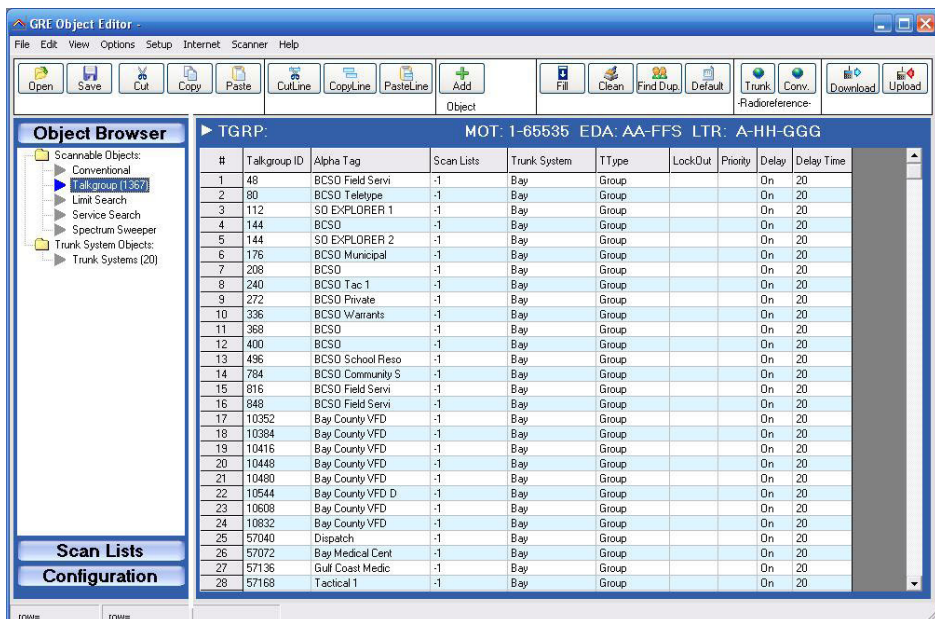
ARC-500 Features

The software package I decided on was Butel ARC-500 that works with the GRE 500/600 scanner series. The ARC-500 is compatible with Windows 2000, XP or Vista, requires either the Radio Shack PC interface cable 20-047 or the GRECOM USB cable to program the scanner. One important caveat when selecting an interface cable: the Radio Shack cables 20-048, 20-049 and 20-289 will work with the GRE PSR-500/PSR-600 scanners.

This is one of the first scanner software packages that supports 800 MHz rebinding. The ARC-500 allows the user to set up custom frequencies for rebanded systems, and the new MOT indexed tables are preloaded as part of the software package. You will be ready to reprogram your 500/600 scanner when your local agency needs.

The ARC-500 has one of the most versatile memory editors available. This software makes it easy to set up any of the object-oriented parameters that GRE scanners use to scan various systems. Whether your object-oriented parameter is a non-trunked conventional frequency, trunk talkgroup, or service search configuration, or Spectrum Sweeper setup, the spreadsheet type interface makes programming a snap. This spreadsheet interface makes it easy to cut, copy and paste object-oriented data into the program.

There is a nice fill-down/series option available on the toolbar that will copy the data from the first selected row to the remaining



Talkgroup listing sorted by alpha tag (Butel)

selected rows, which saves time and typing redundant text. Some of the useful fields that use the fill option include alpha tags and frequency step.

The EasyFill option is a simple, but powerful option that lets you program data in a range of channels with only a few mouse clicks. You can use the EasyFill to quickly program a range of frequencies in a memory bank so that you can use that memory location as a search bank.

You can move channels up and down in the spreadsheet and the program has several enhanced sorting options. There is also a provision to remove duplicate objects that will help conserve memory locations.



The program lets you store an unlimited number of scanning configurations on your hard disk. In addition, you can copy, move, swap and preview any of the user programmed scan lists from within the program. The ARC-500 program also lets the user manage and program any of the V-scanner folders prior to loading them into the scanner.

Data entry is easy using whatever Windows preference you are used to – mouse double click, space bar or keyboard shortcuts.

❖ Import/Exporting Data

This program has several import/export options. The program has a **RadioReference.com** import option for conventional and trunk systems. This will make programming your 500/600 scanner easy. In order to use this feature you must have a Radio Reference subscription, which is not included with the ARC500 software. There is an enhanced CSV file import and mapper, and you can paste frequencies directly from any website using the program's 'Paste Special.' There is also full Windows clipboard support for importing and exporting data to/from other applications. The program will also export data in the CSV format.

CSV Mapper: Import And Modify CSV Files

File Edit

Add Column

0					
173	151.74500	0.00000	KNET397	County/City Services	Edgefield Co. School District
174	151.80500	0.00000	KNHL801	Colleges and Universities	Greenville Tech Security
175	151.85000	159.73500	WPLV837	General Business	Conco Medical Supply/Operation
176	151.86500	0.00000		County Services	Orangeburg Regional Hospital
177	151.92500	0.00000		County Services	Orangeburg Regional Hospital
178	151.95500	0.00000	WPML220	Lexington Co. School District 1	Lexington High School/Lexington
179	152.00750	0.00000	WPKP302	County Agencies	MUSC Paging
180	152.28500	0.00000	KICS94	City Services	Greenwood Public Works
181	152.36000	157.62000	WPAVC626	York School District 1	Maintenance/Operations
182	152.39000	0.00000	KJS762	General Business	Veteran's Cab Company Dispatc
183	152.40500	0.00000	WNXB454	Fire/EMS	Oconee Co. EMS Dispatch
184	152.42000	157.68000	WPLU223	Colleges and Universities	Spartanburg Technical College (S
185	152.46500	157.72500	WPAVC626	York School District 1	School Buses
186	152.91500	152.91500	WGCG786	Clover School District 2	Clover Junior High Talkaround
187	152.91500	159.94500	WGCG786	Clover School District 2	Clover Junior High Repeater
188	152.93000	158.34000	WGEV764	Fort Mill School District 4	Fort Mill High School
189	152.94500	0.00000	WPGC781	County Services	Chesterfield Co. Water
190	152.94500	158.38500	WGBY832	Businesses/Businesses	Rogers Grading
191	152.96000	152.96000	WGCG786	Clover School District 2	Clover High School Talkaround
192	152.96000	159.70500	WGCG786	Clover School District 2	Clover High School Repeater
193	153.00500	0.00000	WPAVC626	York School District 1	Harold C. Johnson Middle
194	153.00500	153.00500	WPYJ504	Clover School District 2	Bethany Elementary
195	153.00500	153.00500	WPYJ504	Clover School District 2	Audit
196	153.00500	153.00500	WPYJ504	Clover School District 2	Crowders Creek Elementary
197	153.12500	153.12500		Clover School District 2	Maintenance Talkaround
198	153.12500	160.81500		Clover School District 2	Maintenance Repeater
199	153.12500	0.00000		General Business	Historic Brattonsville
200	153.35000	158.31500	KIP425	Utilities South Carolina Pipeline Corporation	Tirzah Repeater: Pipeline Control
201	153.41000	0.00000	KICS94	City Services	Greenwood Water
202	153.44000	0.00000	WPGJ929	County Services	Santee Public Works

Replace String: _____ by: _____

Convert Selection To Lower Case

Convert Selection To Upper Case

Apply

Selection: 1 Rows x 1 Cols Row:2 RowSel:2 Col:5 ColSel:5

csv enter/edit screen (Butel)

Virtual Control

The ARC-500 supports virtual control of the 500/600 scanner. When selected from tool bar you will see a window pop up that

shows the scanner display and controls. The scanner window is large and easy to read and displays a duplicate of what is showing on the scanner display. All of the major controls can

be accessed and controlled from this pop up window using your mouse or touch pad.

Bottom line

I really do like this software. It was easy to install (I have used it on a Windows XP/Vista platform). It has made programming the PSR-500/600 much easier than pushing the keys on the scanner.

The documentation that came with the software was an Adobe PDF file. The one downside to the ARC-500 is the manual. I was disappointed with it in general and found quite a few features that were not covered in the manual. The only help file that comes with this program is this PDF manual, and this is an issue which could definitely use some work by Butel.

A plus for the software is that all updates are free for registered users. This will save the user money in the long run.

I purchased the Butel ARC-500 software package from their website at (www.butelsoftware.com). It is available as a download or you can purchase a CD-ROM from various U.S. dealers. The retail price is US\$39.95.

So, if you are having fits programming your GRE PSR-500/600 scanner and haven't figured out yet what the GRE object oriented programming is all about, you should seriously consider purchasing the Butel ARC-500 software package. It will reduce your frustration and make the task of loading up your new scanner much easier and faster.

NEW! GRE PSR-300/400 SCANNERS!



PSR-300

Order SCN13
\$199^{95*}

GRE has two great new scanners, your choice, mobile or handheld, for the same price!

These powerful new units offer all the features you'd expect in a modern scanner, but for a low, low price! Here are the specifications:

- * Frequency range: VHF Low 25.00000 - 54.00000 MHz, VHF Aircraft 108.00000 - 136.99166 MHz, VHF High 137.00000 - 174.00000 MHz; 216.00250 - 299.93750 MHz, UHF Low/T 300.00000 - 512.00000 MHz, UHF High 764.00000 - 960.00000 MHz; 1240.00000 - 1300.00000 MHz, Blocked Frequencies: 824 - 848.9875 MHz; 869 - 893.9875 MHz
- * Step: 3.125, 5, 6.25, 7.5, 8.33, 10, 12.5, 25 kHz
- * New 700MHz coverage and Upgradeable CPU firmware for future rebanding
- * 10 bank and 1000 channel memories for trunking bank and channel combined with conventional mode memory
- * Multi trunking of Motorola (type I, II and hybrid analog system), EDACS wide and LTR
- * CTCSS and DCS Sub-audible encoded squelch mode.
- * Scan both trunking channels and conventional channels at same time.
- * 1500 ID memory in 10 ID banks, 5 sub-ID memories in each bank, and each sub-ID memory has 30 ID locations.
- * Alphanumeric data entry.
- * PC programmable and unit-to-unit cloning.
- * Spectrum sweeper function.
- * Pre-programmed Marine, CB, FRS/GRMS/MURS, Public safety, Aircraft, Amateur, Railroad, and Weather frequencies.
- * WX alert and SAME receiving with 10 FIPS area code memories.
- * Skywarn function.
- * Attenuator control. (Normal attenuator and Global attenuator)
- * Built-in power save circuit.
- * Frequency tune mode. (Frequency UP or DOWN)
- * "Zeromatic" tuning system.
- * Change the direction at the searching by UP or DOWN.
- * 60 channels/sec. scanning rate and 75 steps/sec. searching rate.
- * 2 second scan and search delay.
- * Manual selection for channel.
- * Scan mode. [Cleared channels (000.000 freq.) are not scan.]
- * Deleting a frequency from a channel.
- * 1 limit search bank.
- * Key lock for safety.
- * Key tone and alert tone.
- * 16 characters x 4 lines and 8 icons LCD.
- * Signal strength meter.
- * Backlit LCD and key pads.
- * Crystal filter for 2nd IF and Ceramic filter for 3rd IF section.
- * 50 lock out frequencies per search bank, Public safety, Aircraft, Ham, Railroad, Limit search
- * Frequency lock-out review and Channel lock-out review.
- * PC Interface / Clone jack.

Order SCN14
\$199^{95*}

PSR-400



GROVE

800-438-8155
828-837-9200 fax: 828-837-2216
WWW.GROVE-ENT.COM

order@grove-ent.com
7540 Highway 64 West
Brasstown, NC 28902

* plus \$12.95 Priority Mail or
UPS Ground shipping in the US